

The PSAT[®]:

A Step to the Future

- Head start for SAT[®] test success
- Valuable detail on student critical skill levels
- Best means to personalize free, official SAT preparation
- New administration opportunity with AMIDEAST: quick response allows spring 2020 start



What is the PSAT?

- Measures academic skills needed for university success
- Created by the College Board, developer of the SAT, for younger students
- Same content areas as SAT. Results predict SAT score.
- Taken by 3.5 million students annually



Who Takes PSAT?

- Spring testing ideal for tenth graders but open to all
- Primarily eleventh and tenth graders take fall PSAT test
- Separate PSAT 8/9 version now exists designed for testing eighth and ninth graders (fall or spring)

SAT/PSAT Content Scoring Areas

1 Total Score
400–1600 Scale

Total Score

2 Section Scores
200–800 Scale

Evidence-Based Reading and Writing

Math

3 Test Scores
10–40 Scale

Reading

Writing and Language

Math

2 Cross-Test Scores
10–40 Scale

Analysis in Science

Analysis in History/Social Studies

7 Subscores
1–15 Scale

Words in Context

Heart of Algebra

Command of Evidence

**Problem Solving and
Data Analysis**

Expression of Ideas

**Passport to
Advanced Math**

**Standard English
Conventions**



How does the PSAT compare to the SAT?

- Question Types:
The same, except the PSAT and PSAT 8/9 do not have an optional essay component.
- Length:
The SAT is 3 hours (plus 50 minutes for optional essay).
The PSAT is 2 hours, 40 minutes.
The PSAT 8/9 is 2 hours, 25 minutes



How does the PSAT compare to the SAT?

- Scoring: scales vary slightly as the younger test takers will not be given material to which they would not yet typically have been introduced.
 - The SAT scale is 400-1600.
 - The PSAT scale is 320-1520.
 - The PSAT 8/9 scale is 240-1440
- A score range provided with test results shows what a test taker would have achieved on SAT.



PSAT Results

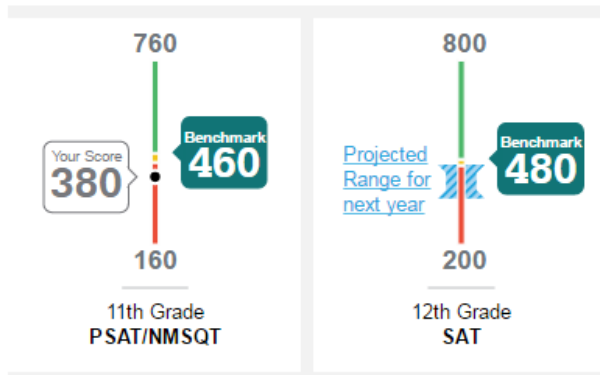
- PSAT score reports provide a range of useful data such as—
 - Predicted score range on SAT
 - Benchmarking of section scores in relation to grade levels
 - Likely current skills and how to improve them
 - Detail on questions missed

PSAT Score Report Detail

Your Evidence-Based Reading and Writing Score ⓘ

380 | 160 to 760

My Score Range: 350-410



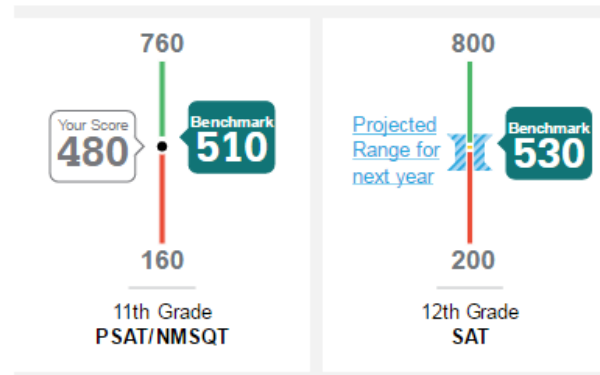
! Your scores indicate you need to strengthen your college readiness skills.

Let's get you on track, so you won't have to take noncredit courses in college. Choose to share your scores on [Khan Academy®](#) to receive free, personalized practice recommendations.

Your Math Score ⓘ

480 | 160 to 760

My Score Range: 450-510



! Your scores indicate you are close to being on track for college readiness, but you need to continue to strengthen your skills.

Let's get you on track, so you won't have to take noncredit courses in college. Choose to share your scores on [Khan Academy®](#) to receive free, personalized practice recommendations.

PSAT Score Report Detail

Section scores

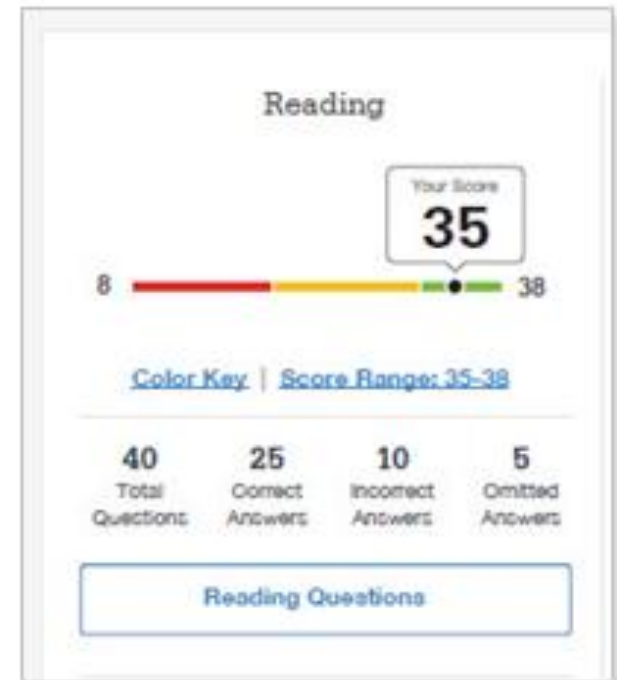
Need to Strengthen Skills = below grade-level benchmark by more than one year

Approaching Benchmark = below grade-level benchmark by one year or less

Meets or Exceeds Benchmark = at or above grade-level benchmark

Test scores and subscores

Red, yellow, and green ranges reflect areas of strengths and weaknesses compared to the typical performance of students



PSAT Score Report Detail



Your Score

Reading Questions

Your score indicates that you are already likely able to:

Revise text as needed to improve the exactness or content appropriateness of word choices within somewhat challenging texts

Retain or add information or ideas to a piece of a text to support claims or points in somewhat challenging text

Command of Evidence Standard English Conventions

Revise somewhat challenging text to ensure that information is presented in the most logical order

Revise text as needed to improve the exactness or content appropriateness of word choices within somewhat challenging texts

Retain or add information or ideas to a piece of a text to

Improve your skills by focusing on:

Retain or add information or ideas to a piece of text to support claims or points in challenging text

Command of Evidence Standard English Conventions

Use a variety of sentence structures to accomplish a rhetorical purposes such as persuading an audience

Revise text as needed to improve the exactness or content appropriateness of word choices within challenging texts

Expression of Ideas Relevant Words in Context

Retain or add information or ideas to a piece of text to support claims or points in challenging text

Use a variety of sentence structures to accomplish a



PSAT Score Report Detail

- Each score report provides—
 - Actual questions and whether answered correctly
 - Detail on missed question subtopics and difficulty levels
 - Explanation of correct answers
- Score reports can be accessed as paper copies or online, including by phone

Khan Academy



- PSAT test results easily import to the Khan Academy Web site
 - The official College Board SAT test prep source
 - Thousands of practice questions and videos as well as full-length tests
 - PSAT results personalize recommendations and study plan

We'd love to start by practicing what you missed on the PSAT.

To make this happen, we'll have you sign in to [CollegeBoard.org](#) and send your PSAT results to Khan Academy. Doing this will enable you to skip our diagnostic quizzes. We will also receive updates about the date of your upcoming SAT.

If you haven't taken the PSAT yet, no worries, let's take your first diagnostic quiz.

A Sign in to [CollegeBoard.org](#) and send your PSAT results to Khan Academy

B Take your first diagnostic quiz



Request for Approval

Khan Academy is requesting permission for the following:



Press "Send" below to give College Board permission to send your test results to Khan Academy so that Khan Academy can personalize your practice recommendations based on how you did. And once you're registered for the SAT, **College Board will also send Khan Academy your upcoming test date** so they can update your practice schedule. You can remove permission at any time.

Logged in as **SOA1693**



Don't Send

Send



Analyzing your PSAT results...

YOUR PERSONALIZED PRACTICE IS READY!



TODAY'S GOAL

Practice your skills

Choose the area you'd like to focus on for improvement today.

Practice Reading & Writing

Practice Math

Top test scores

[View Full Exams](#)

TOTAL

1280

MATH

600

READING & WRITING

680

Current skill levels

[What are skill levels?](#)

 [Math](#)

 [Reading & Writing](#)

Contact us

MATH

READING & WRITING

Your Math practice recommendations

OVERALL
Math 



LAST MISSED ON THE PSAT/NMSQT®

Right triangle word problems

Level 2 questions completed: 0 of 20

Practice this skill



Right triangle word problems



Solving quadratic equations



Quadratic and exponential word problems



15 min TIMED MINI-SECTION Math (Calculator OK)

Let us know if you have a problem or an idea for making this system better!

PSAT Calendar

- **Tests are ordered and administered at limited times**
 - **Spring 2020 ordering window closes**
 - **Tests then need to be administered in April**

Working with AMIDEAST

- Order tests through AMIDEAST to simplify the process
 - No need to apply for a separate school code
 - We work with you to provide any logistical, test prep, or other support you may need

Contact Information

For orders inquiries, please contact:
Carole Haber, Testing Programs Manager
Phone number: 961 1 989901 ext:150
Email: chaber@amideast.org